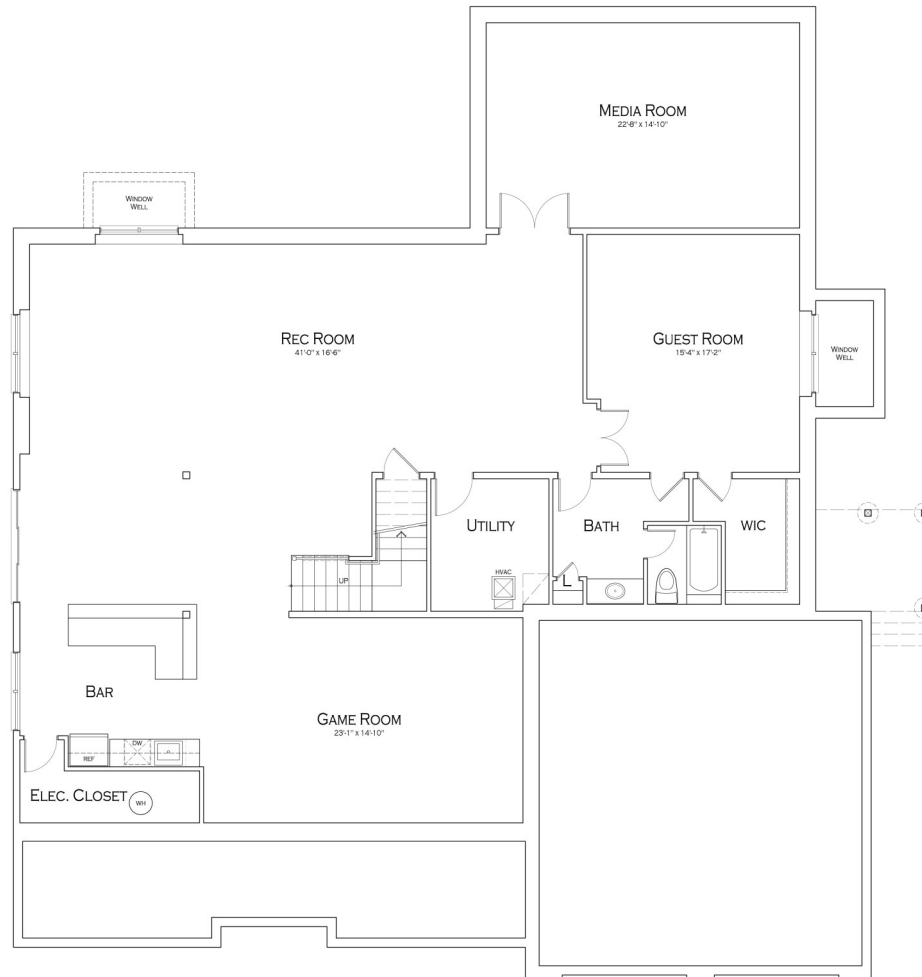


Approximately 5,100 square feet above grade, 2,200 below grade



Walkouts/walkups and windows may change based on the slope of the lot.

**BASEMENT FLOOR PLAN**  
2,269 Sq.Ft.

All dimensions shown on plans are approximate. Plans and specifications are subject to modification and improvement at any time without notice or obligation. Room dimensions may vary between printed material, website, model homes and individually built homes. The elevations and floor plans are a rendering and accuracy cannot be guaranteed and is not part of a legal contract.



